



Design, Functionality
and Affordability



M-SERIES ALUMINUM RAILING SYSTEM
COMMERCIAL | RESIDENTIAL | NEW CONSTRUCTION | MULTI-FAMILY

Alumina Railing Products' M-Series Aluminum Railing System offers the perfect combination of design, functionality and affordability to satisfy both commercial and residential applications. Manufactured from extruded aluminum components, the M-Series is engineered for durability and long-term structural integrity. The railing system's sleek profile and high-caliber finishes enhance architectural aesthetics while minimizing maintenance costs.

Design-Built Railing Solutions

Alumina's railing systems are trusted by architects, builders, contractors and developers throughout the United States for condominium, apartment, residential and commercial projects. Our railing systems comply with national OSHA and ADA safety regulations.

The M-Series is custom fabricated to meet high-quality and demanding requirements. All projects are built to your provided specifications or, if you need design assistance, Alumina's qualified professionals are here to help.



FEATURES

- ◆ Customizable designs offer expanded options.
- ◆ Wide variety of infill options along with multiple top cap profiles provide more design flexibility.
- ◆ Affordable, maintenance-free, durable finish options extend the product lifespan.
- ◆ Twelve in-house powder coat options are standard; custom colors available upon request.
- ◆ Easy installation reduces labor cost.
- ◆ Innovative design allows for easy repairs and replacement of components.

STANDARD COLORS

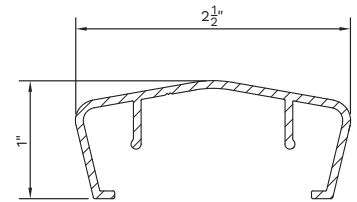
			
Coastal White	Anodized Silver	Silverstorm	Westchester Gray
			
Linen	Overcast	Sandstone	Paleo Bone
			
Bronze	Satin Black	Forest Green	Revolutionary



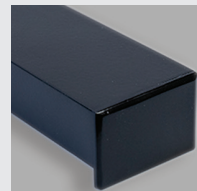
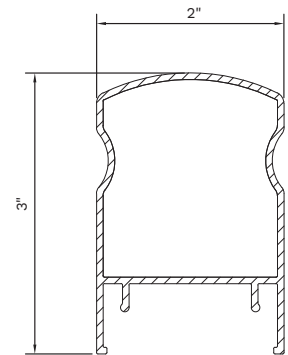
CAP PROFILES



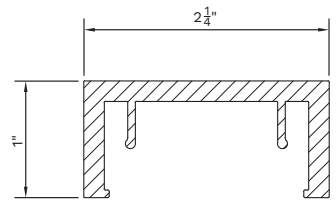
Top Cap Profile 1



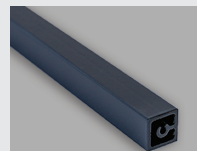
Top Cap Profile 2



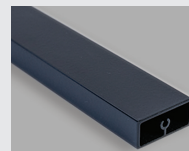
Top Cap Profile 3



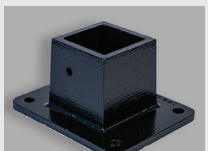
COMPONENTS



5/8" x 5/8"
Picket Option A



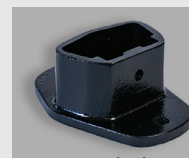
1-1/2" x 5/8"
Picket Option B



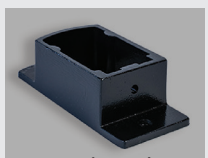
Post Boot



1-3/4" Square Post



Vertical
Wall Bracket



Horizontal
Wall Bracket

View our full product line at
www.AluminaRailing.com

SECTION 057300 ORNAMENTAL ALUMINUM RAILINGS

PART 1 – GENERAL

1.1 SECTION INCLUDES

This section includes furnishing and installing all aluminum handrail systems as indicated on drawings.

- A. Ornamental Aluminum Railing
(M-200 / M-300 / M-400 SERIES)

1.2 RELATED SECTIONS

- A. Section 03 30 00 – Cast-in-Place Concrete: Furnishing of sleeves cast in concrete.
- B. Section 05 50 00 – Metal Fabrications
- C. Section 05 51 00 – Metal Stairs: Handrails other than those specified in this section.
- B. Section 05 52 13 – Pipe and Tube Railings
- C. Section 06 10 00 – Rough Carpentry: Placement of blocking.

1.3 REFERENCES

- A. AAMA 2604 – Performance Requirements and Test Procedures for High-Performance Organic Coatings on Aluminum Extrusions and Panels.
- B. ANSI A1264.1 – Safety Requirements for Workplace Floor and Wall Openings, Stairs, and Railing Systems.
- C. ASTM E 935-00(2006) – Standard Test Methods for Permanent Metal Railing Systems and Rails for Buildings.
- D. ASTM E985-00(2006) – Standard Specification for Permanent Metal Railing Systems and Rails for Buildings.

1.4 DESIGN / PERFORMANCE REQUIREMENTS

- A. Comply with requirements of building authorities having jurisdiction in Project location and the following:
1. Handrail Standard: ANSI A1264.1
 2. Occupational Safety and Health Administration – 29 CFR 1910.23 – Guarding floor and wall openings.
 3. Railings at stairs with more than 3 risers shall be designed with an ADA-compliant handrail.
- B. Design loads: Design, fabricate, and install handrails, guardrails, and railing systems to withstand, when tested per ASTM E935, loadings required by applicable building and safety codes but not less than the following:
1. Handrail and Top Rails: Concentrated and uniform loading need not be applied simultaneously.
 - a. Uniform load: 50 pounds per foot (74.3 kg/m) applied at the top in any direction.
 - b. Concentrated load: 200 pounds (90.6 kg) applied at the top in any direction.
 2. Infill: Infill load and other loads need not be applied simultaneously.
 - a. Concentrated load: 50 pounds (22.65 kg) applied horizontally on any area of 1 square foot (0.093 square meters)
- C. Corrosion Control: Prevent electrolytic reaction between dissimilar metals and other forms of corrosion by insulating metals and other materials from direct contact with incompatible materials.
- D. Provide ADA-compliant handrail, including mounting brackets, elbows, transitions, wall brackets, and other appurtenances necessary for a complete installation complying with requirements of authorities having jurisdiction.

1.10 WARRANTY

- A. Provide with manufacturer's limited lifetime warranty.

PART 2 – PRODUCTS

2.1 MANUFACTURERS

- A. Acceptable Manufacturer:

1. Alumina Railing Products, Inc.
8301 Strimple Road
Cleveland, Ohio 45002
Phone: (513) 353-1116
Fax: (513) 353-2116
Website: www.aluminarailing.com
Email: info@aluminarailing.com

2.2 MATERIALS

- A. Extrusions: Extruded aluminum to be 6063-T5 or T6 aluminum alloy.
- A. Fasteners: All fasteners to be galvanized or stainless steel.

2.3 FINISHES

- A. AAMA 2604 Standard Powder Coating (1.5 – 2 mil coverage)
1. Standard Colors: Coastal White, Anodized Silver, Silverstorm, Westchester Gray, Linen, Overcast, Sandstone, Paleo Bone, Bronze, Satin Black, Forest Green, and Revolutionary.
 2. Custom colors available per special order.

PART 3 – EXECUTION

3.5 CLEANING

- A. Remove dust or other foreign matter from component surfaces; clean finishes in accordance with AAMA 609 and AAMA 610-02.
- B. Wash railing as needed with clean water and soap, rinse with water.
- C. Do not use acidic solutions, harsh abrasives, or cleaners containing abrasive materials.

FULL SPECIFICATIONS LOCATED AT WWW.ALUMINARAILING.COM



Alumina Railing Products, Inc.
8301 Strimple Rd., Cleveland, OH 45002
Phone: (513) 353-1116 | Fax: (513) 353-2116
Email: info@aluminarailing.com
www.AluminaRailing.com